

WE PUSH THE BOUNDARIES OF DESIGN

to inspire those in the quest for timeless and uniqueness





WE PUSH THE BOUNDARIES OF MATERIALS

to transform them into art



WE PUSH THE BOUNDARIES OF ALCHEMY

to create unique pieces that transform the spaces we live in



SURFACES

art by BELT

Metal alchemy infused by a tool like no
other; our hands

A unique palette of colors, textures
and finishes that have the power to
transform the spaces we live in.



SURFACES

art by BELT

***Patinas:* Natural Tones and Colors**

***Touch:* Hand-infused Textures**

Hammered • Chiseling • Photoengraving

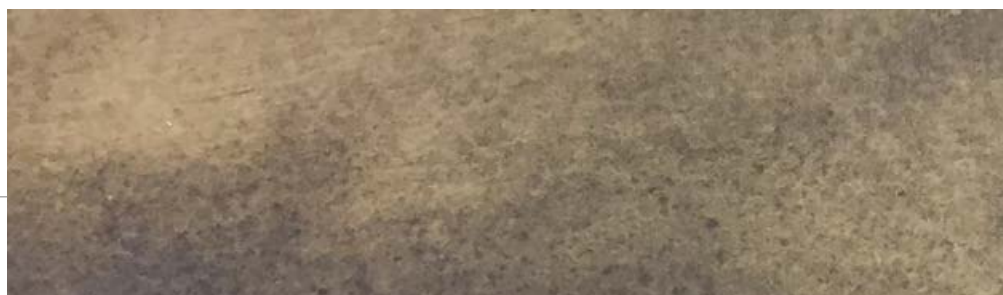
***Origine:* Nature-Inspired Organic Textures**



PATINAS

NATURAL TONES & COLORS

SURFACES by BELT





WASHED PATINA LIGHT

Hand-applied light to dark bronze patina • Special Finish • **BRONZE**

SURFACES
by BELT



WASHED PATINA DARK

Hand-applied medium to dark bronze patina • Special Finish • **BRONZE**

SURFACES
by BELT



CONTROLLED PATINA

Hand-applied medium (03-04) even bronze patina • Special Finish • **BRONZE**, CR Steel similar tone achievable

SURFACES
by BELT



BRUSHED PATINA

Hand-applied medium (03-04) organic bronze patina • Special Finish • **BRONZE** CR Steel similar tone achievable

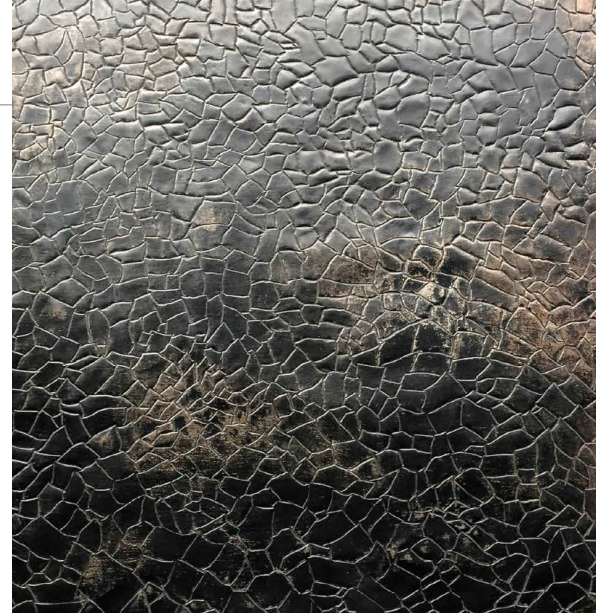
SURFACES
by BELT



MULTIDIRECTIONAL BRUSHED PATINA

Hand-applied light gray blackened steel patina with multidirectional • Special Finish • **COLD ROLLED**, similar tone achievable in Aluminum

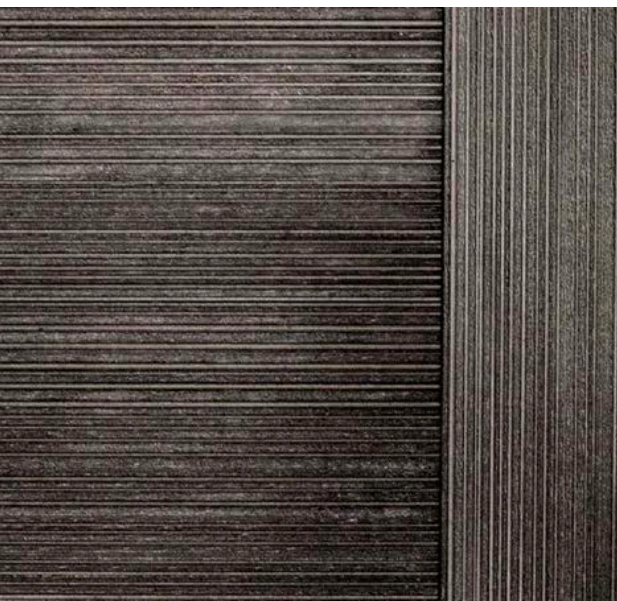
SURFACES
by BELT



TOUCH

HAND-INFUSED TEXTURES

SURFACES by BELT





• Special Finish • Aluminum (image), Achievable with different intensity in all other materials,

CONCENTRIC HAMMERING

Hand-texturized natural polished aluminum • Special Finish • ALUMINUM Achievable with different intensity in all other materials,

SURFACES
by BELT



DEEP HAMMERING

Hand-texturized natural bronze • Special Finish • BRONZE Achievable with different intensity in all other materials,

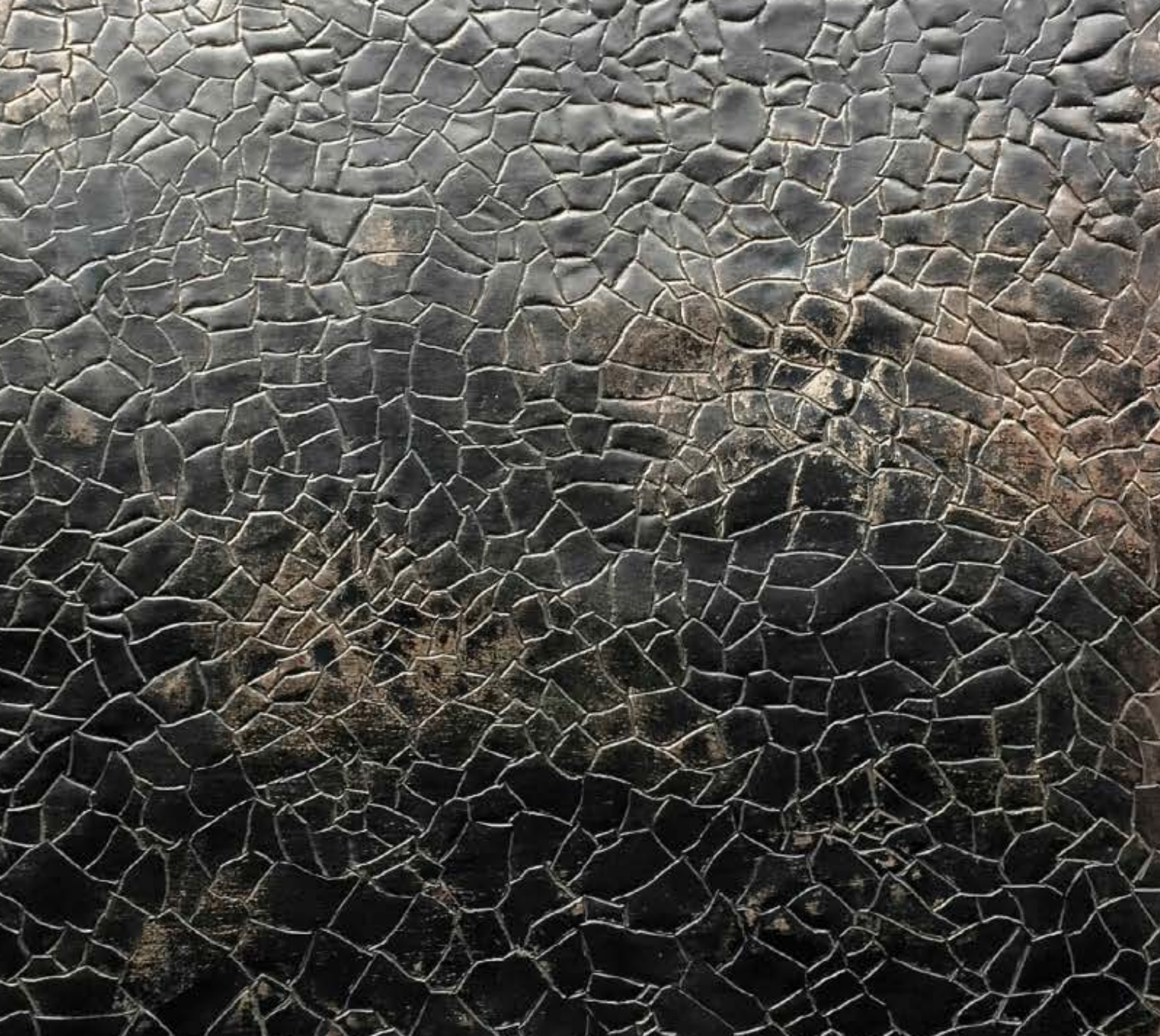
SURFACES
by BELT



FREE HAMMERING

Hand-texturized natural bronze • Special Finish • BRONZE Achievable with different intensity in all other materials,

SURFACES
by BELT



CHISELING: DESERT

Hand-texturized • Blackened Steel Patina + Naturally Aged • **COLD ROLLED STEEL** Achievable with different intensity in all other materials,

SURFACES
by BELT



CHISELING: CITYSCAPE

Hand-texturized • Blackened Steel Patina + Natural Finish • **COLD ROLLED STEEL** Achievable with different intensity in all other materials,

SURFACES
by BELT



CHISELING: SQUARED SKIN

Hand-texturized • Blackened Steel Patina + Natural Aged • **COLD ROLLED STEEL** Achievable with different intensity in all other materials,

SURFACES
by BELT



PHOTOENGRAVING: CONTROLLED STRIPES

Hand-texturized • Linear photoengraving Blackened Steel Patina • **COLD ROLLED STEEL** [available in all other materials]

SURFACES
by BELT



PHOTOENGRAVING: MAPPED STRIPES

Hand-texturized CR steel • Linear + mapped engraving + blackened Steel Patina • **COLD ROLLED STEEL** [available in all other materials]

SURFACES
by BELT



PHOTOENGRAVING: AGED STRIPES

Hand-texturized CR steel • Linear photoengraving Blackened Steel Patina • **HOT ROLLED STEEL** [available in all other materials]

SURFACES
by BELT



PHOTOENGRAVING: AGED MAPPED STRIPES

Hand-texturized CR steel • Linear + mapped engraving + blackened aging Patina • **COLD ROLLED STEEL** [available in all other materials]

SURFACES
by BELT



PHOTOENGRAVING: LAYERED WAVES

Hand-texturized • multiple photoengraving layers + Blackened Steel Patina • **COLD ROLLED STEEL** [available in all other materials]

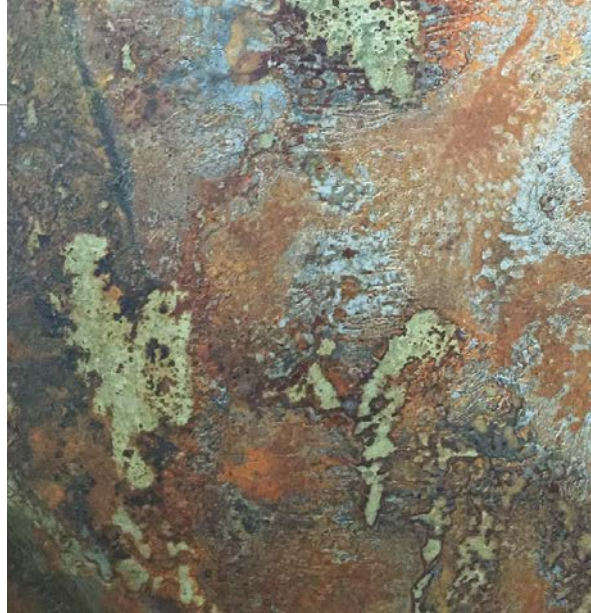
SURFACES
by BELT



PHOTOENGRAVING: LAYERED MAPPED WAVES

Hand-texturized CR steel • multiple photoengraving layers + Blackened Steel Patina • **COLD ROLLED STEEL** [available in all other materials]

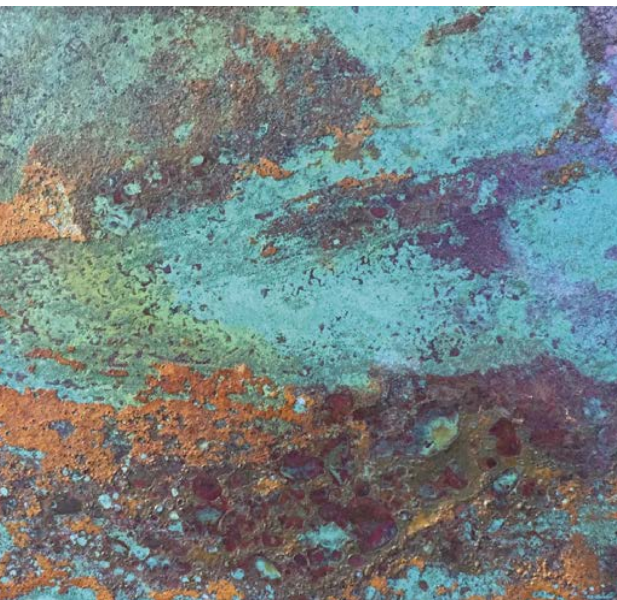
SURFACES
by BELT

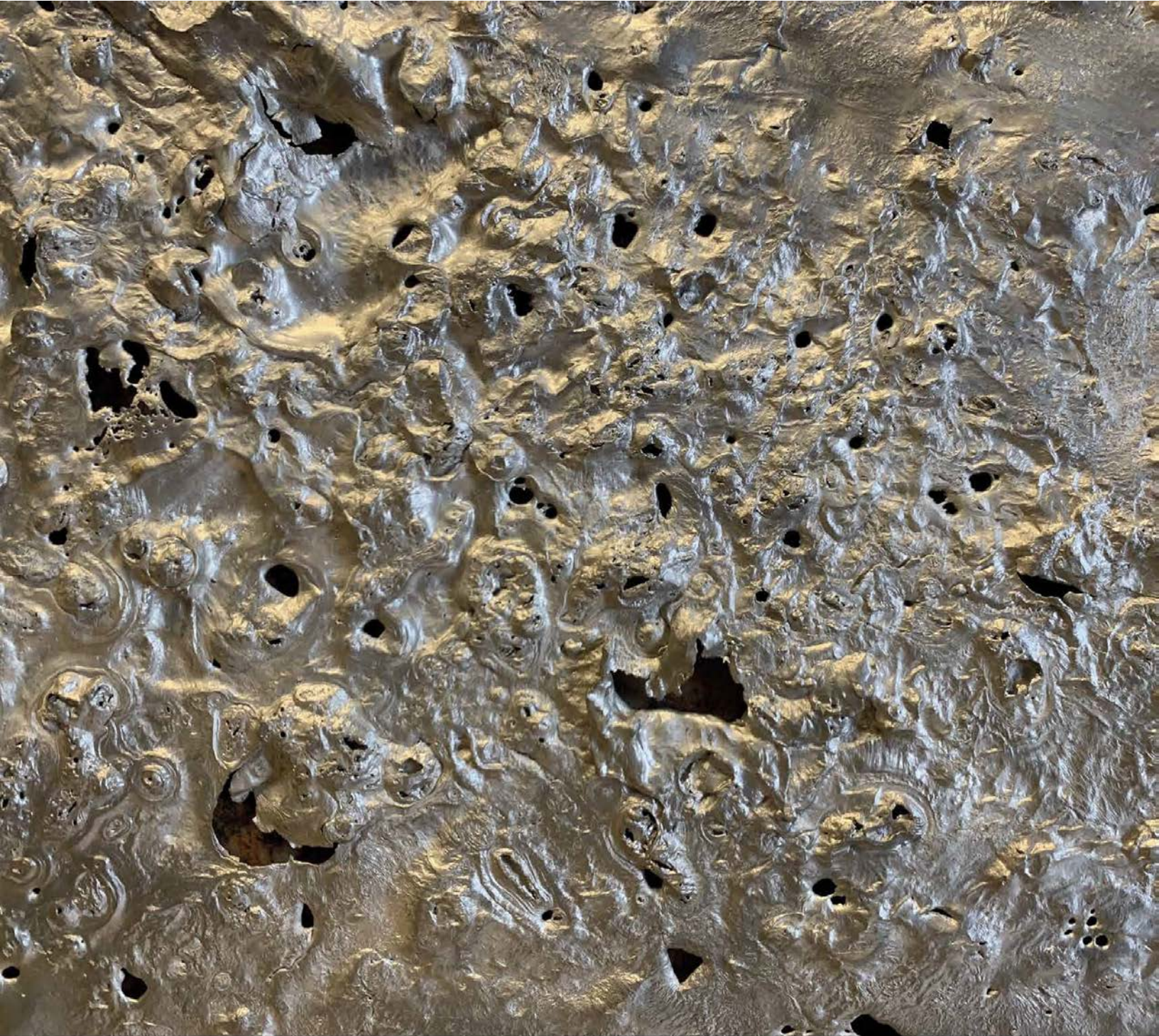


ORIGINE

NATURE INSPIRED TEXTURES

SURFACES by BELT





ORIGINE: MELTING SILVER

Hand-texturized • Organic Castings+ Natural Finish • **TIN** [available Aluminum and Bronze]

SURFACES
by BELT



ORIGINE: SIMPLE MAPPING

Hand-texturized • Multiple photoengraving layers + Blackened Steel Patina • CR STEEL [available in all other materials]

SURFACES
by BELT



ORIGINE: LIGHT MAPPING

Hand-texturized • Multiple photoengraving layers + Blackened Steel Patina • BRONZE [available in other materials different hues]

SURFACES
by BELT



ORIGINE: OXIDE 1

Hand-texturized • Multiple photoengraving layers + Steel Patina • HOT ROLLED STEEL [available in other materials different hues]

SURFACES
by BELT



ORIGINE: OCEAN OXIDE

Hand-texturized • Multiple photoengraving layers + Steel Patina • BRONZE [available in other materials different hues]

SURFACES
by BELT



ORIGINE: LAVA OXIDE

Hand-texturized • Multiple photoengraving layers + Steel Patina •COPPER [available in other materials different hues]

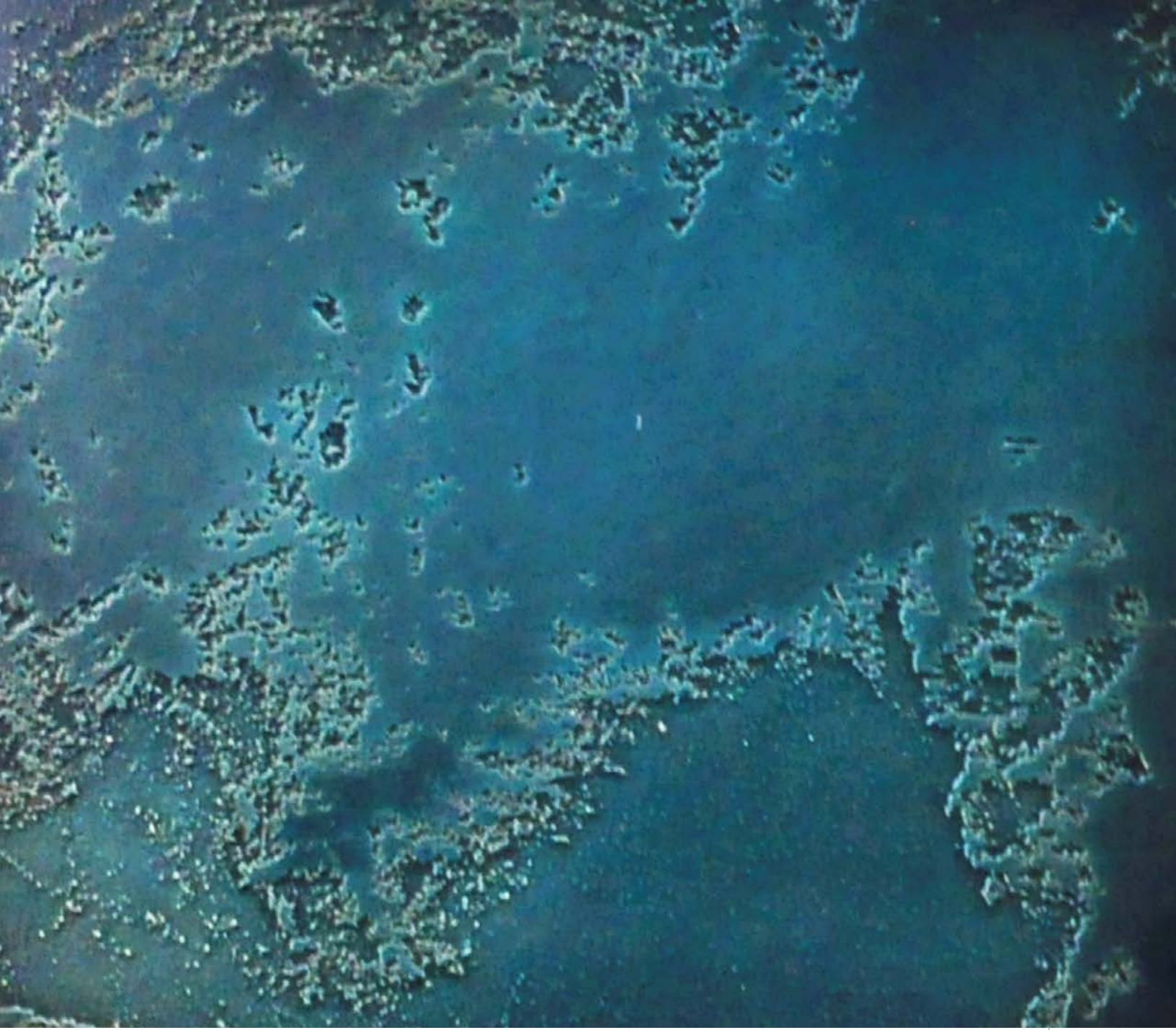
SURFACES
by BELT



ORIGINE: TURQUOISE OXIDE

Hand-texturized • Multiple photoengraving layers + Steel Patina • BRONZE [available in other materials different hues]

SURFACES
by BELT



ORIGINE: DEEP TURQUOISE OCEAN

Hand-texturized • Multiple photoengraving layers + Steel Patina • BRONZE [available in other materials different hues]

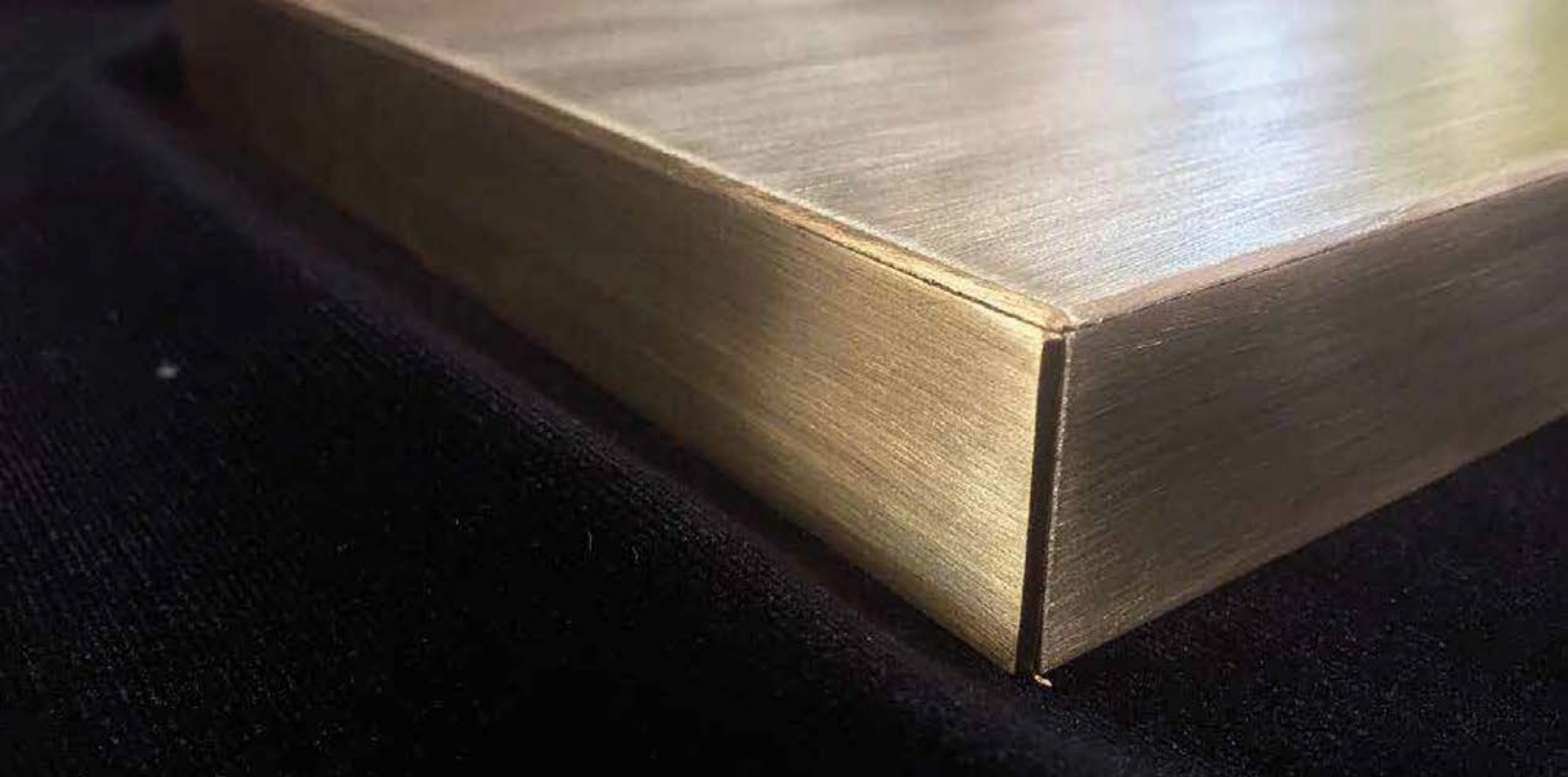
SURFACES
by BELT



THE INFINITE COMBINATION OF
MATERIALS, ART AND SCIENCE
**HAVE THE POWER TO TRANSFORM
THE SPACES OUR PIECES LIVE IN.**

SURFACES
by BELT





WE BELIEVE IN THEIR POWER DETAILS
**WE PUT ALL OUR ATTENTION IN EACH
DETAIL OF EVERY PIECE WE CREATE**

SURFACES

by BELT



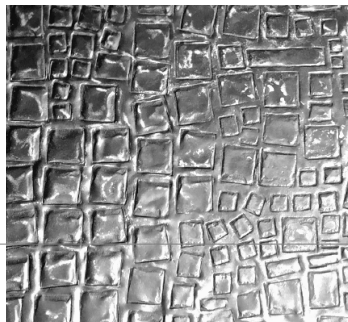
ART WALL

CR STEEL technique combination
with embedded light fixture

The products 100% handmade by our artists



Photoengraving: **Mapped Stripes**



INSERTS Chiseling **squared skin**



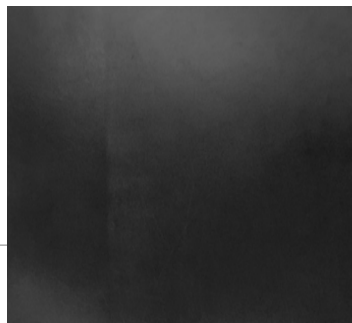
Finish: **Gray and Dark Blackened Steel**



ART KITCHEN

DARK BRONZE patina on
kitchen Cabinets

The products 100% handmade by our artists



PATINA: **Dark Bronze (BP06)**



PATINA: **Dark Bronze (BP05)**



PATINA: **Light Bronze (BP03)**



01



02



03

SCULPTURE WALL

Art Commissioned to Louis Beltran
Combination of three metals and
various techniques

01. COLD ROLLED STEEL CLADDING

Applied technique: Linear photo engraving - Satin finish BSP 05

02. HOT ROLLED STEEL CLADDING

Applied technique: Blackened Steel Patina

03. SCULPTURE WALL

Photoengraved aluminum with Polished Bronze inserts. More than 300 pieces compose this wall





01



02



DOOR CLADDING

Dark patina on entry door
exterior & interior

01. EXTERIOR ALUMINUM CLADDING

Applied technique: Blackened Dark Aluminum

02. EXTERIOR BRONZE BACKPLATE & HANDLE

Applied technique: Bronze Patina

EXPERIENCING SURFACES

TEXTURES. COLORS. PATINAS

- **About Textures:** All textures and patterns are handmade by our team of artists led by **Sculptor Louis Beltran**. This makes every piece unique revealing the beauty of the human touch in truly one-of-a-kind pieces, colors, and textures variations occur.
- **About Patinas:** The nature of metals is to age over time. All artistic patinas are living finishes, they are hand-applied combining art, craftsmanship, and science. The rate of change over time in the patinas depends on several variables such as weather, exposure to rain, sun, and other environmental conditions.
- **About Maintenance:** To preserve a finish close to the original patina, maintenance is essential. If hand-applied patinas are not well maintained, eventually the organic nature of the material will run its course and take over the process.
- **About Finishes:** Each material creates different colors, tones, and hues, these may vary as they are applied on different surfaces, material gauges, and weather conditions at the time of application
- **About Hues:** Darker patinas help hide inherent defects in the metal substrate, contrary to light ones that expose material natural defects

SURFACES
by BELT

SURFACE CLADDING

APPLICATION

FEATURED WALLS • DOORS • CABINETS • CUSTOM FURNITURE

- **Configuration options:**
 - **With MDF substrate:** Metal gauges 16, 18, 20, 22
 - **Without substrate:** Metal gauges 1/4, 1/8, 12, 14, 16
- What to consider when selecting construction options:
 - *The thickness of the metal (gauge)*
 - *Panel sizing and design*
 - *The type, strength, and malleability of metal selected*
 - *Installation location*
 - *Anchoring surface; drywall, plywood, concrete, wood, etc.*
 - *Design Needs: Reveals, details, corners and other accents*
- **Anchoring Options:** *We have developed various mounting options for claddings that are mounted directly into a door or a wall. These are studied on a case-by-case basis to respond to project conditions and requirements. Contact us with project requirements for more details*
- **Furniture and accents cladding application:**
 - *BELT will manufacture the cabinet doors with the millwork details with exact dimensions*
 - *BELT may manufacture furniture pieces or components with the millwork details*
 - *BELT may clad a piece manufactured by others. Shipping and other fees may apply.*
 - *Hardware and installation typically by others.*

SURFACES
by BELT

MATERIALS

SURFACE CLADDINGS

FERROUS METALS

- **COLD ROLLED STEEL**
 - **Use:** Only Interiors
 - **Panels Max Size (Regular):** 48" x 96"
 - **Panels Max Size (Custom):** 48" x 120" / 60"x120"
- **HOT ROLLED STEEL**
 - **Use:** Only Interiors
 - **Panels Max Size (Regular):** 48" x 96"
 - **Panels Max Size (Custom):** 48" x 120" / 60"x120"
- **STAINLESS STEEL**
 - **Use:** Interiors & Exteriors
 - **Panels Max Size (Regular):** 48" x 96"
 - **Panels Max Size (Custom):** 48" x 120" / 60"x120"

MATERIALS BEHAVIOR

- Hot and Cold rolled steel may be used on exterior on limited application.
- Steel patinas may vary slightly due to application temperature, exposure, material hardness, hand labour.
- In interior controlled moist and temperature environments finishes are practically maintenance free.
- Blackened stainless steel patina may have brownish accents
- Natural finishes in stainless steel durable when not exposed to extreme weathers; in this situation regular cleaning and maintenance is required

SURFACES
by BELT

MATERIALS

SURFACE CLADDINGS

NON-FERROUS METALS

- **BRONZE**

- **Use:** Interiors & Exteriors
 - **Panels Max Size (Regular):** 24" x 79"
 - **Panels Max Size (Custom):** 48" x 96" / 60"x120"

- **ALUMINUM**

- **Use:** Interiors and Exteriors*
 - **Panels Max Size (Regular):** 48" x 96"
 - **Panels Max Size (Custom):** 40" x 79" / 60"x120"

MATERIALS BEHAVIOR

BRONZE

- The darker the patina the less the patina color will change over time.
- Specially when exposed to weather; Light Patinas will require strict maintenance on pieces that are exposed to the touch or weather. (Eg. Sweat of hands 'attacks' the material)
- **Interior Use**
 - Dark patinas in pieces with moist and temperature-controlled environments are low maintenance.
- **Exterior Use**
 - Patinas exposed to humid environments or moist will change over time and natural bronze patinas will appear if no maintenance is performed.

ALUMINUM

- Material suitable for exteriors.
- In moist and temperature-controlled environments finishes are virtually maintenance-free.
- A clear coat may be recommended for natural finished surfaces exposed to manipulation.

SURFACES
by BELT

FROM THE ARTIST



The Arts are the highest tangible expression of men that brings us closer to God the creator of the universe. Creativity is along with love, the pair most sublime of human talents and its expression elevates our souls to the highest spiritual stages, transmuting inside of each one who achieved to decrypt it, either as a creator or as audience. Reaching endless new levels of conscience.

- Louis Beltran, MAESTRO

We transform spaces through unique metal pieces. Let your self get inspired with our unique metal artwork for one-of-a-kind projects, we work transforming our client's dream in pieces that tell stories.

Beltr

SURFACES

by BELT

LEARN MORE

BELT.COM.CO

LETS COLLABORATE

+1 954 505 7400

contact@belt.com.co

VISIT OUR SHOWROOM

3000 Stirling Road, #104,
Hollywood, FL 33021.

by Appointment

LETS CONTINUE THE CONVERSATION

FOLLOW US

@belt_bespokemetal